

Home on 4.7+/- Acres with a Pool and a Pond  
Walthall County, MS



691 Hwy 98 W Tylertown, MS 39667

Have you been searching for an affordable home in Walthall County, MS? This two story, four bedroom, four bath home is situated on 4.7+/- acres in Tylertown and features a heated in-ground pool as well as a pond for fishing with the conveniences of home. The first floor offers two master bedrooms, each with their own bath, a beautiful stone fireplace in the living room, and the kitchen has breakfast nook seating with a pool view. Two bedrooms and a full bath are on the second level of the home. The beautiful, large, open yard offers room to roam and limitless possibilities. Conveniently located approximately 10 minutes West of Tylertown High School and 18 minutes East of McComb. Call Blake today to schedule your viewing!

Directions: From Interstate 55 at Hwy 98, travel east on Hwy 98 for approximately 16.5 miles. The home will be located on the north side of Hwy 98. Address: 691 Hwy 98 W Tylertown, MS 39667



*call me today!*

**BLAKE SASSER**, REALTOR®  
Blake@TomSmithLand.com  
601.990.5070 **office** | 601-757-5027 **cell**



**TomSmithLandandHomes.com**

Information is believed to be accurate but not guaranteed.





**BLAKE SASSER**, REALTOR®  
 Blake@TomSmithLand.com  
 601.990.5070 office | 601-757-5027 cell

**TomSmithLandandHomes.com**

Information is believed to be accurate but not guaranteed.





**BLAKE SASSER**, REALTOR®  
 Blake@TomSmithLand.com  
 601.990.5070 office | 601-757-5027 cell

**TomSmithLandandHomes.com**

Information is believed to be accurate but not guaranteed.



**BLAKE SASSER**, REALTOR®  
 Blake@TomSmithLand.com  
 601.990.5070 office | 601-757-5027 cell

**TomSmithLandandHomes.com**

Information is believed to be accurate but not guaranteed.





Aerial Map

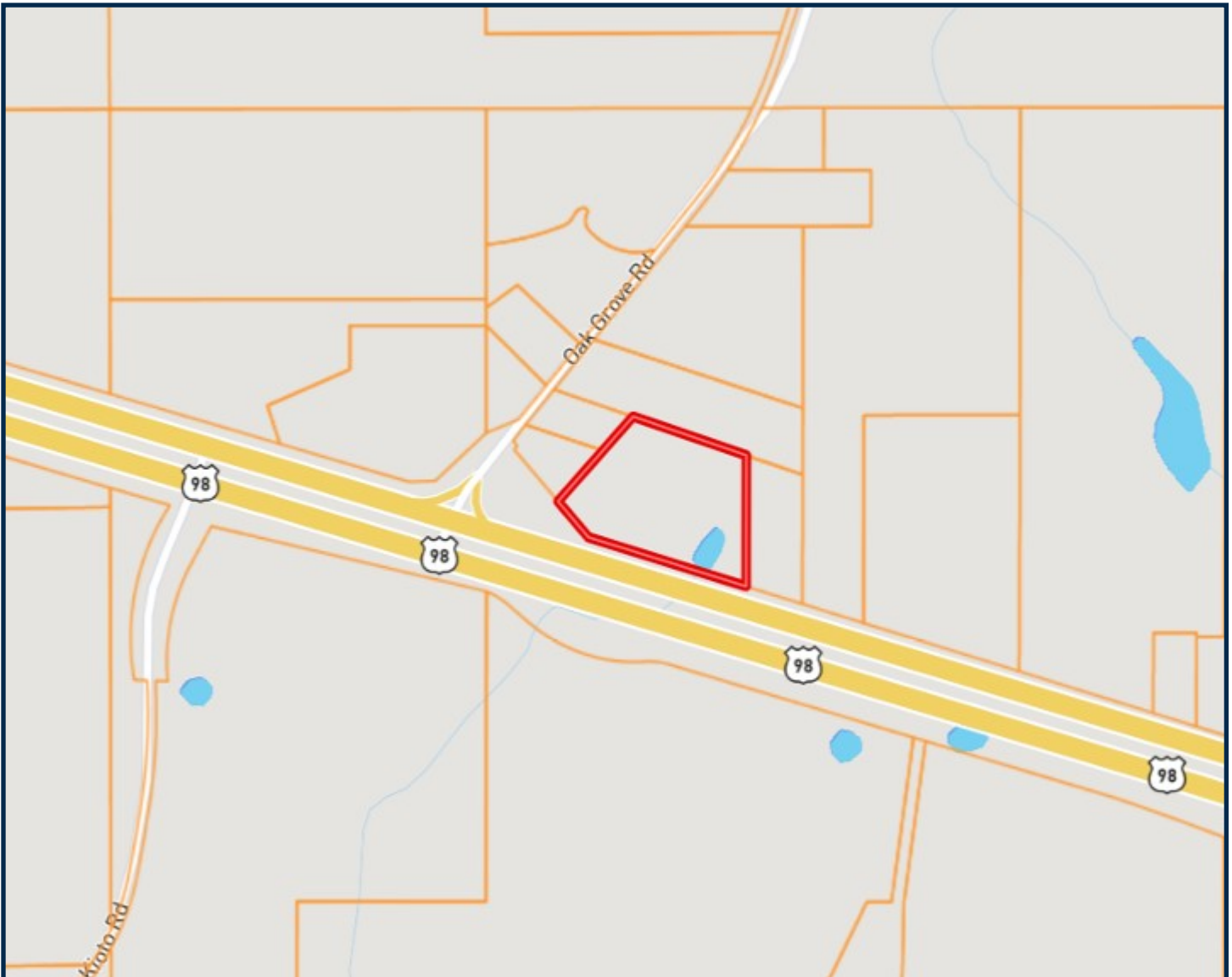


**BLAKE SASSER**, REALTOR®  
Blake@TomSmithLand.com  
601.990.5070 office | 601-757-5027 cell



**TomSmithLandandHomes.com**

Information is believed to be accurate but not guaranteed.



Ownership Map



**BLAKE SASSER**, REALTOR®  
Blake@TomSmithLand.com  
601.990.5070 office | 601-757-5027 cell



**TomSmithLandandHomes.com**

Information is believed to be accurate but not guaranteed.



## Directional Map

**Directions:** From Interstate 55 at Hwy 98, travel east on Hwy 98 for approximately 16.5 miles. The home will be located on the north side of Hwy 98. Address: 691 Hwy 98 W Tylertown, MS 39667



**BLAKE SASSER**, REALTOR®  
 Blake@TomSmithLand.com  
 601.990.5070 office | 601-757-5027 cell



# TomSmithLandandHomes.com

Information is believed to be accurate but not guaranteed.