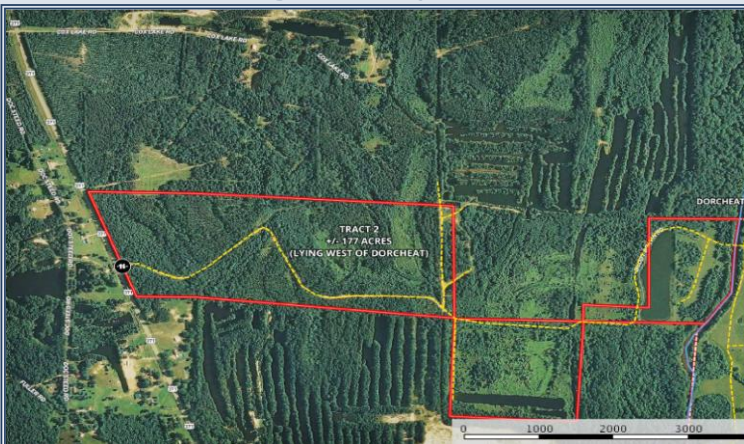




176+/- acres of recreational timberland with 1400' of Hwy 371 frontage and only 2.8 miles north from Dixie Inn. This acreage is extremely diverse with a good deal of merchantable pine timber, lowland swamps, old gravel pits and some clearings for food plots. There is also a 4 and 8 acre pond that holds good water year-round. This property also sits on the western bank of Dorcheat Bayou, with about 1400' of frontage. This tract is probably loaded with deer, ducks, turkeys, fish and small game and it's been priced to sell. 160+/- acres is also for sale directly across Dorcheat Bayou! Please give me a call for a private showing, David Hooper 318-453-9101
www.ArkLaTexLandSales.com

Highway 371, Dixie Inn

32.631204, -93.3576525 GPS



- Timber Value
- Diverse Landscape
- Nice Road Through out
- Beautiful Year-Round Ponds
- Highway Access
- Frontage Along Dorcheat Bayou
- Webster Parish Land
- 2.8 Miles from Dixie Inn



\$442,500

176 Acres
MLS #230628
UC #23042-30628



David Hooper

dhooper4@hotmail.com
Office: (601) 250-0017
Cell: (318) 453-9101
www.ArkLaTexLandSales.com