

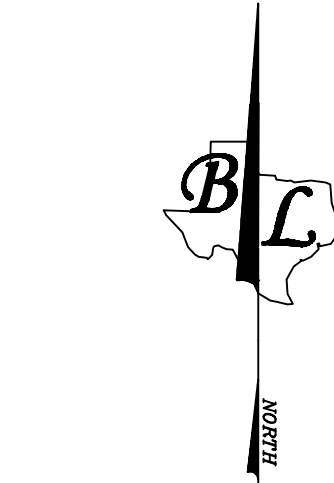


TAG#	TYPE	SIZE (in)	TAG#	TYPE	SIZE (in)	TAG#	TYPE	SIZE (in)	TAG#	TYPE	SIZE (in)
1	HACKBERRY	10	301	LIVE OAK	9	401	CEDAR	8	481	LIVE OAK	6
2	ELM	8	302	LIVE OAK	7	402	LIVE OAK	8	482	LIVE OAK	6
3	CYPRESS	21	303	LIVE OAK	8	403	LIVE OAK	8	483	LIVE OAK	11
4	ELM	6	304	LIVE OAK	6	404	LIVE OAK	12	484	LIVE OAK	10
5	ELM	13	305	LIVE OAK	6	405	LIVE OAK	7	485	LIVE OAK	12
6	ELM	8	306	LIVE OAK	8	406	LIVE OAK	8	486	LIVE OAK	8
7	PECAN	9	307	LIVE OAK	8	407	LIVE OAK	8	487	LIVE OAK	12
8	ELM	10	308	LIVE OAK	9	408	LIVE OAK	8	488	LIVE OAK	10
9	PECAN	8	309	LIVE OAK	9	409	LIVE OAK	6	489	LIVE OAK	15 RATED
10	PECAN	40	310	LIVE OAK	8	410	LIVE OAK	10	490	LIVE OAK	11
11	HACKBERRY	11	311	LIVE OAK	8	411	LIVE OAK	8	491	LIVE OAK	17 RATED
12	LIVE OAK	33	312	LIVE OAK	13 RATED	412	LIVE OAK	10	492	LIVE OAK	10
13	LIVE OAK	26	313	LIVE OAK	9	413	LIVE OAK	9	493	LIVE OAK	9
14	HACKBERRY	17	314	LIVE OAK	8	414	LIVE OAK	10	494	LIVE OAK	11
15	HACKBERRY	10	315	LIVE OAK	8	415	LIVE OAK	11	495	LIVE OAK	13
16	HACKBERRY	7	316	LIVE OAK	9	416	LIVE OAK	10	496	LIVE OAK	14
17	ELM	15	317	LIVE OAK	15 RATED	417	LIVE OAK	7	497	LIVE OAK	12
18	ELM	14	318	LIVE OAK	7	418	LIVE OAK	8	498	LIVE OAK	11
19	UNKNOWN	8	319	LIVE OAK	8	419	LIVE OAK	9	499	LIVE OAK	9
20	HACKBERRY	17	320	LIVE OAK	7	420	LIVE OAK	9	500	LIVE OAK	12
21	PECAN	7	321	LIVE OAK	6	421	LIVE OAK	6			
22	PECAN	7	322	LIVE OAK	7	422	LIVE OAK	11			
23	PECAN	15	323	LIVE OAK	8	423	LIVE OAK	8			
201	LIVE OAK	8	324	LIVE OAK	7	424	LIVE OAK	8			
202	LIVE OAK	7	325	LIVE OAK	8	425	LIVE OAK	11			
203	LIVE OAK	8	326	LIVE OAK	10	426	LIVE OAK	8			
204	LIVE OAK	8	327	LIVE OAK	9	427	LIVE OAK	8			
205	LIVE OAK	15 RATED	328	LIVE OAK	8	428	LIVE OAK	8			
206	LIVE OAK	9	329	LIVE OAK	9 RATED	429	LIVE OAK	10			
207	LIVE OAK	12 RATED	330	LIVE OAK	8	430	CEDAR	10			
208	LIVE OAK	9	331	CEDAR	8	431	LIVE OAK	8			
209	LIVE OAK	7	332	LIVE OAK	6	432	CEDAR	17			
210	LIVE OAK	11	333	LIVE OAK	11 RATED	433	LIVE OAK	8			
211	LIVE OAK	10	334	LIVE OAK	9	434	LIVE OAK	13 RATED			
212	LIVE OAK	10 RATED	335	LIVE OAK	11 RATED	435	LIVE OAK	10			
213	LIVE OAK	11	336	LIVE OAK	15	436	LIVE OAK	13			
214	LIVE OAK	7	337	CEDAR	9	437	CEDAR	8			
215	LIVE OAK	7	338	LIVE OAK	8	438	CEDAR	9			
216	LIVE OAK	11 RATED	339	LIVE OAK	6	439	LIVE OAK	38 RATED			
217	LIVE OAK	11 RATED	340	LIVE OAK	7	440	LIVE OAK	6			
218	LIVE OAK	7	341	LIVE OAK	7	441	LIVE OAK	7 RATED			
219	LIVE OAK	7	342	LIVE OAK	9 RATED	442	LIVE OAK	7			
220	LIVE OAK	11 RATED	343	CEDAR	9 RATED	443	LIVE OAK	12			
221	LIVE OAK	8	344	LIVE OAK	7	444	LIVE OAK	8			
222	LIVE OAK	9	345	LIVE OAK	6	445	CEDAR	14			
223	LIVE OAK	8	346	LIVE OAK	6	446	LIVE OAK	9			
224	LIVE OAK	10 RATED	347	LIVE OAK	7	447	LIVE OAK	11			
225	LIVE OAK	24 RATED	348	CEDAR	11	448	LIVE OAK	9			
226	LIVE OAK	22 RATED	349	LIVE OAK	9 RATED	449	LIVE OAK	7			
227	LIVE OAK	10	350	LIVE OAK	8 RATED	450	LIVE OAK	9			
228	LIVE OAK	16 RATED	351	LIVE OAK	7	451	CEDAR	16			
229	LIVE OAK	6	352	LIVE OAK	6	452	LIVE OAK	12			
230	LIVE OAK	17 RATED	353	CEDAR	8	453	LIVE OAK	16			
231	LIVE OAK	9 RATED	354	LIVE OAK	12 RATED	454	LIVE OAK	15 RATED			
232	LIVE OAK	8	355	ELM	8	455	CEDAR	12			
233	LIVE OAK	9	356	PECAN	11	456	CEDAR	18			
234	LIVE OAK	8	357	CYPRESS	50	457	CEDAR	8			
235	LIVE OAK	8	358	PECAN	21 RATED	458	LIVE OAK	13			
236	LIVE OAK	10 RATED	359	HACKBERRY	10 RATED	459	LIVE OAK	14			
237	LIVE OAK	7	360	HACKBERRY	16	460	CEDAR	14			
238	LIVE OAK	8	361	UNKNOWN	15 RATED	461	LIVE OAK	8			
239	LIVE OAK	12	362	HACKBERRY	15	462	LIVE OAK	14			
240	LIVE OAK	10	363	CEDAR	10	463	LIVE OAK	12			
241	LIVE OAK	11	364	CEDAR	10	464	LIVE OAK	11			
242	LIVE OAK	13 RATED	365	CEDAR	19	465	LIVE OAK	12			
243	LIVE OAK	6	366	UNKNOWN	9	466	LIVE OAK	10			
244	LIVE OAK	9 RATED	367	PECAN	12	467	LIVE OAK	8			
245	LIVE OAK	10 RATED	368	ELM	15	468	CEDAR	8			
246	LIVE OAK	11 RATED	369	LIVE OAK	19	469	LIVE OAK	7			
247	LIVE OAK	9	370	CEDAR	15	470	CEDAR	9			
248	LIVE OAK	11	371	ELM	16 RATED	471	LIVE OAK	11			
249	LIVE OAK	11	372	LIVE OAK	32	472	LIVE OAK	7			
250	LIVE OAK	11	373	LIVE OAK	37	473	LIVE OAK	7			
251	LIVE OAK	15	374	CEDAR	9 RATED	474	LIVE OAK	10			
252	LIVE OAK	10	375	PECAN	14	475	LIVE OAK	7			
253	LIVE OAK	10	376	PECAN	23	476	LIVE OAK	6			
254	LIVE OAK	9	377	ELM	11	477	LIVE OAK	11			
255	LIVE OAK	8	378	ELM	7	478	LIVE OAK	8			
256	LIVE OAK	9	379	ELM	8	479	LIVE OAK	11			
257	LIVE OAK	7	380	HACKBERRY	10	480	LIVE OAK	6			
258	LIVE OAK	14	381	ELM	15						
259	LIVE OAK	14	382	HACKBERRY	23						
260	LIVE OAK	19	383	HACKBERRY	15						
261	LIVE OAK	12	384	HACKBERRY	25						
262	LIVE OAK	7	385	LIVE OAK	20						
263	LIVE OAK	12	386	HACKBERRY	31 RATED						
264	LIVE OAK	8	387	ELM	10						
265	LIVE OAK	25	388	HACKBERRY	19						
266	LIVE OAK	10	389	ELM	27						
267	LIVE OAK	7	390	HACKBERRY	8						
268	LIVE OAK	7	391	LIVE OAK	37						
269	LIVE OAK	8	392	HACKBERRY	13						
270	LIVE OAK	11	393	HACKBERRY	12						
271	LIVE OAK	10	394	LIVE OAK	9						
272	LIVE OAK	10	395	HACKBERRY	17						
273	LIVE OAK	14	396	PECAN	23						
274	LIVE OAK	7	397	HACKBERRY	10						
275	LIVE OAK	8	398	HACKBERRY	7						
276	LIVE OAK	9	399	PECAN	16						
277	LIVE OAK	22	400	PECAN	29						
278	LIVE OAK	14									
279	LIVE OAK	8									
280	LIVE OAK	11 RATED									
281	LIVE OAK	11									
282	LIVE OAK	12									
283	LIVE OAK	8									
284	LIVE OAK	9									
285	LIVE OAK	7									
286	LIVE OAK	6									
287	LIVE OAK	7									
288	LIVE OAK	11									
289	LIVE OAK	8									
290	LIVE OAK	14 RATED									
291	LIVE OAK	11									
292	LIVE OAK	11									
293	LIVE OAK	11									
294	LIVE OAK	13									
295	LIVE OAK	9									
296	LIVE OAK	12									
297	LIVE OAK	20									
298	LIVE OAK	14									
299	LIVE OAK	14									
300	LIVE OAK	10									

CURVE TABLE					
CURVE	RADIUS	LENGTH	DELTA	BEARING	CHORD
C1	300.00	174.04	33°14'22"	S06°54'41"W	171.61
(C1)	300.00	173.87	33°12'27"	S06°53'23"W	171.45
C2	150.00	92.90	35°29'11"	S07°59'35"W	91.43
(C2)	150.00	92.96	35°33'27"	S08°02'23"W	91.48
C3	150.00	70.69	27°00'08"	S39°15'37"W	70.04
(C3)	150.00	70.67	26°59'43"	S39°17'28"W	70.02
C4	135.00	65.30	27°42'43"	N38°52'16"E	64.66
(C4)	135.00	65.22	27°40'45"	N38°56'56"E	64.59

BEARING BASIS: TEXAS STATE PLANE COORDINATE SYSTEM, CENTRAL ZONE, NAD 83/93.

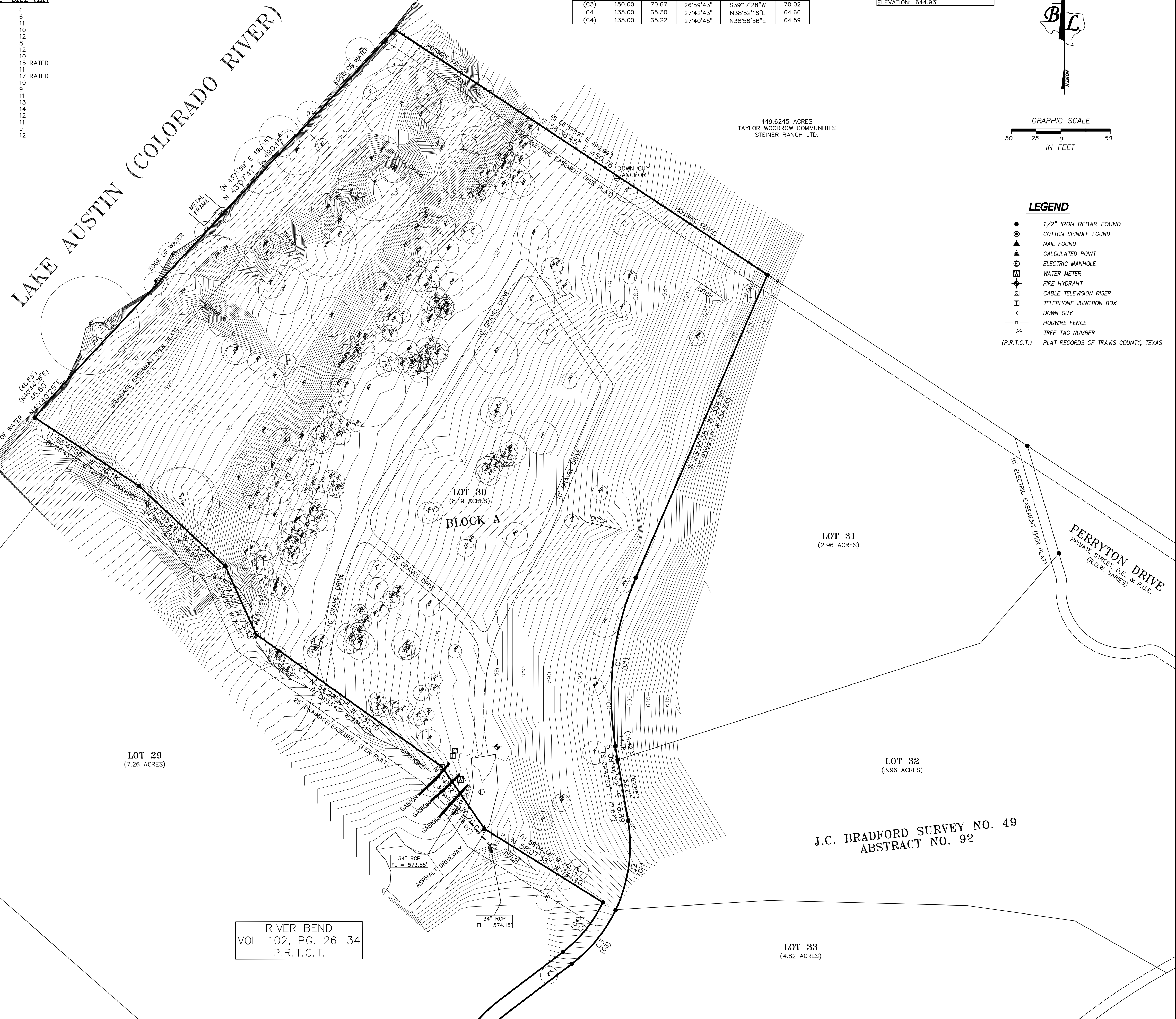
BENCHMARK: EUD-136
 C.O.A. DISK IN CONCRETE AT THE
 SOUTHEAST CORNER OF QUINLAN
 PARK ROAD & SELMA HUGHES ROAD.
 ELEVATION: 644.93'



LEGEND

- 1/2" IRON REBAR FOUND
- COTTON SPINDLE FOUND
- ▲ NAIL FOUND
- ▲ CALCULATED POINT
- ⊙ ELECTRIC MANHOLE
- ⊙ WATER METER
- ⊙ FIRE HYDRANT
- ⊙ CABLE TELEVISION RISER
- ⊙ TELEPHONE JUNCTION BOX
- ⊙ DOWN GUY
- HOGWIRE FENCE
- ⊙ TREE TAG NUMBER
- (P.R.T.C.T.) PLAT RECORDS OF TRAVIS COUNTY, TEXAS

LAKE AUSTIN (COLORADO RIVER)



449.6245 ACRES
 TAYLOR WOODROW COMMUNITIES
 STEINER RANCH LTD.

PERRYTON DRIVE
 PRIVATE STREET, D.E.S. & P.U.E.
 (R.O.W. VARIES)

J.C. BRADFORD SURVEY NO. 49
 ABSTRACT NO. 92

RIVER BEND
 VOL. 102, PG. 26-34
 P.R.T.C.T.

BL
BASILINE LAND SURVEYORS, INC.
 PROFESSIONAL LAND SURVEYING SERVICES
 8333 CROSS PARK DRIVE
 AUSTIN, TEXAS 78754
 TELE: 512.374.9722 FAX: 512.873.9743
 scott.basiline@austin.tx.bl.com

SITE DESIGN SURVEY OF 8.19 ACRES OF LAND OUT OF THE
 J.C. BRADFORD SURVEY NO. 49, ABSTRACT NO. 92 IN TRAVIS
 COUNTY, TEXAS AND BEING LOT 30, BLOCK A, RIVER BEND, A
 SUBDIVISION OF RECORD IN VOLUME 102, PAGES 26-34 OF
 THE PLAT RECORDS OF TRAVIS COUNTY, TEXAS.

Job No.	Date:	Scale (Vert.):	Checked By:
File: S:\Projects\Casiano\Draw\Site Design.dwg	03/14/07	1"=50'	JSL
Drawn By:	Revision 1:	Revision 2:	Revision 3:
RLW			